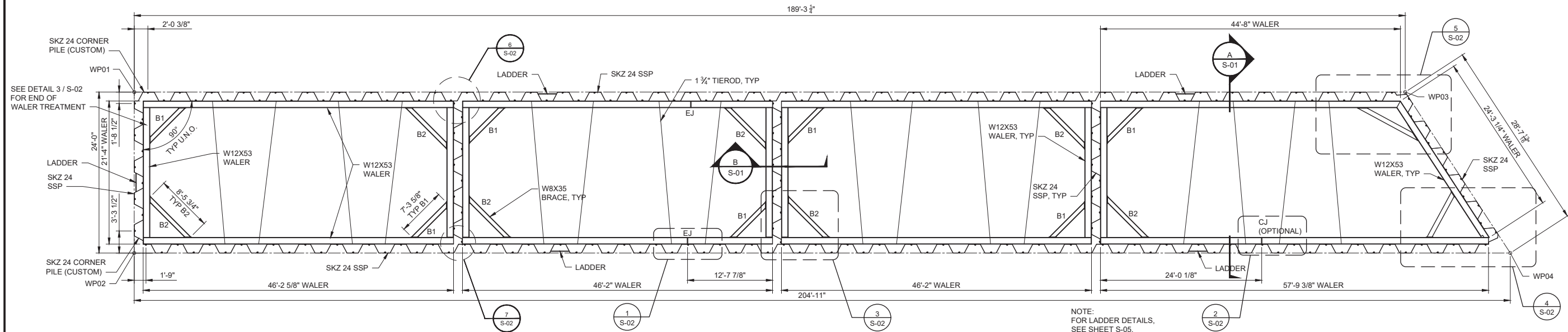


File name: C:\USERS\KOSTAMOL\OneDrive - AECOM\PROJECTS\DRIVE\DOCUMENTS\PROJECT WORK\JACKSON HARBOR\DWG_01\JACKSON HARBOR.DWG
 Plotted: 2022-08-13
 Last saved by: KOSTAMOL
 Project Management Initials: Designer: ## Checked: ## Approved: ## ARCH D 24" x 36"

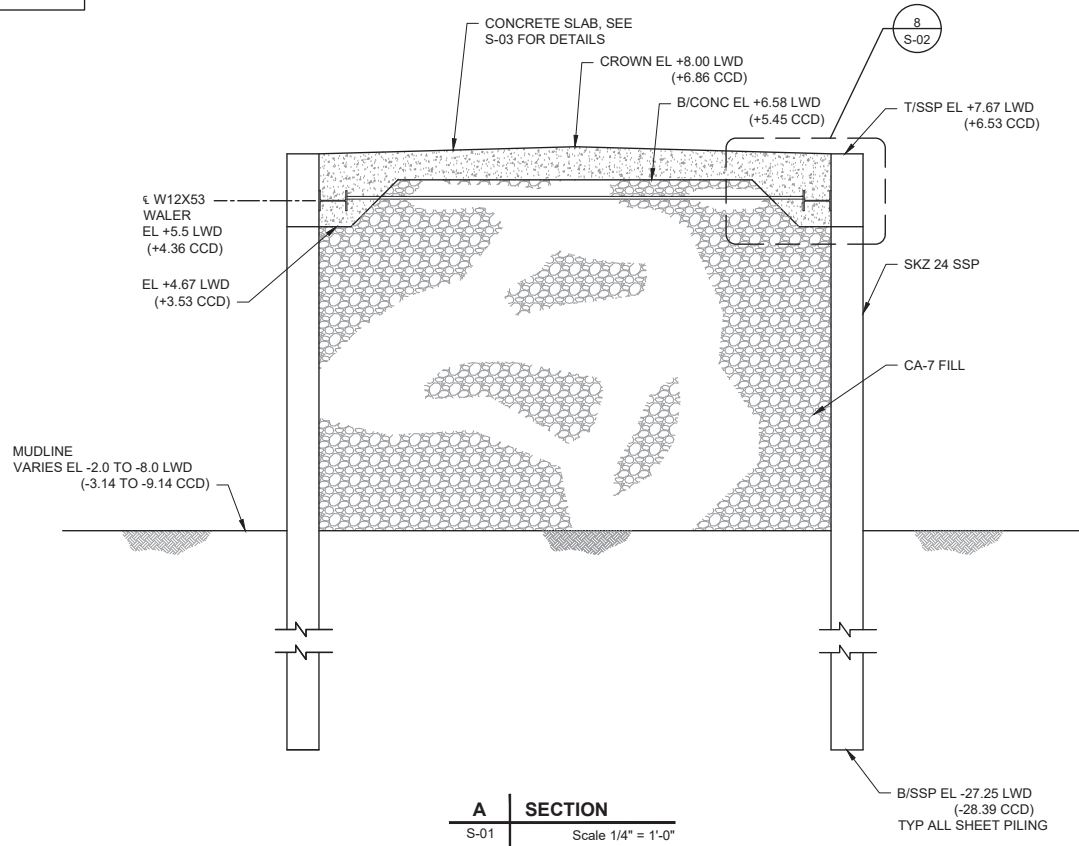


1 PIER PLAN
S-01 Scale 1/8" = 1'-0"

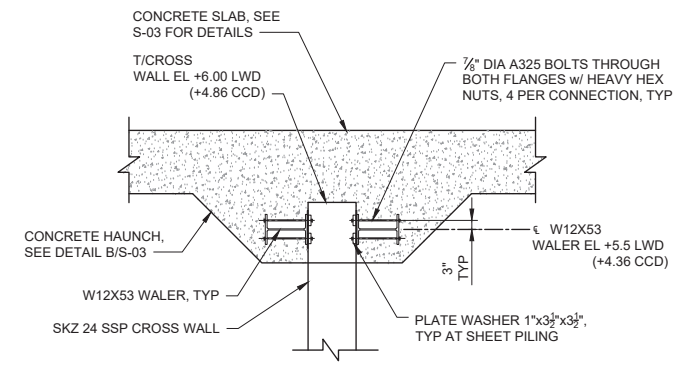
DRIVING LINE WORKING POINTS		
PT #	NORTHING	EASTING
WP01	1863278.1661	1191798.8585
WP02	1863285.3392	1191775.9555
WP03	1863097.5077	1191742.3601
WP04	1863089.7443	1191714.8177

- NOTES:**
1. STRUCTURAL STEEL PER ASTM A992.
 2. STEEL SHEETING SHALL PER ASTM A572, GR. 50.
 3. FABRICATION AND ERECTION PER AISC SPECIFICATIONS.
 4. ALL WELDING SHALL CONFORM TO AWS D1.1 USING E70XX, LOW HYDROGEN ELECTRODES.
 5. CONCRETE SHALL HAVE A 28 DAY COMPRESSIVE STRENGTH OF 4000 PSI AND SHALL BE IN ACCORDANCE WITH SPECIFICATIONS.
 6. COMPACT TOP OF CA-7 PRIOR TO CONCRETE PLACEMENT.
 7. STRUCTURAL STEEL MEMBERS AND TIE RODS SHALL BE COATED WITH SHERWIN WILLIAMS DURA-PLATE 235 MULTI-PURPOSE EPOXY PAINT SYSTEM WITH ZINC-CLAD II HS PRIMER. IN ADDITION TIE-RODS SHALL BE ENCASED IN PVC TUBING PRIOR TO PLACEMENT.
 8. SUBMIT A LAYOUT OF CONSTRUCTION JOINTS FOR REVIEW AND APPROVAL PRIOR TO CONCRETE WORK.
 9. CONTRACTOR SHALL FIELD VERIFY CONDITIONS RELEVANT TO THE PROPER CONSTRUCTION OF THE WORK AND IMMEDIATELY BRING IN DIFFERENCES TO THE ATTENTION OF THE OWNER.
 10. CONTRACTOR SHOULD BE AWARE THAT SEQUENCE STEP #3 BELOW COULD CAUSE SHEET PILING TO DEFLECT OUTWARDS BY APPROXIMATELY 1 INCH.

- SUGGESTED CELL CONSTRUCTION SEQUENCE**
1. CLEAR DRIVING LINE.
 2. DRIVE SHEET PILING.
 3. (OPTIONAL) FILL CELL WITH CA-7 TO A MAXIMUM ELEVATION OF +4.75 LWD.
 4. INSTALL WALERS, TIE-RODS, AND BRACES.
 5. INSTALL FILL AS NECESSARY PRIOR TO CONCRETE PLACEMENT.



A SECTION
S-01 Scale 1/4" = 1'-0"



B SECTION
S-01 Scale 3/8" = 1'-0"



303 East Wacker Dr. Suite 1400
Chicago, Illinois 60601
312.939.1000
www.aecom.com
Copyright 2020 ©
By: AECOM USA, Inc

CHICAGO PARK DISTRICT
 JACKSON HARBOR
 CHICAGO, IL

JACKSON HARBOR
 PIER FRAMING PLAN
 AND SECTIONS

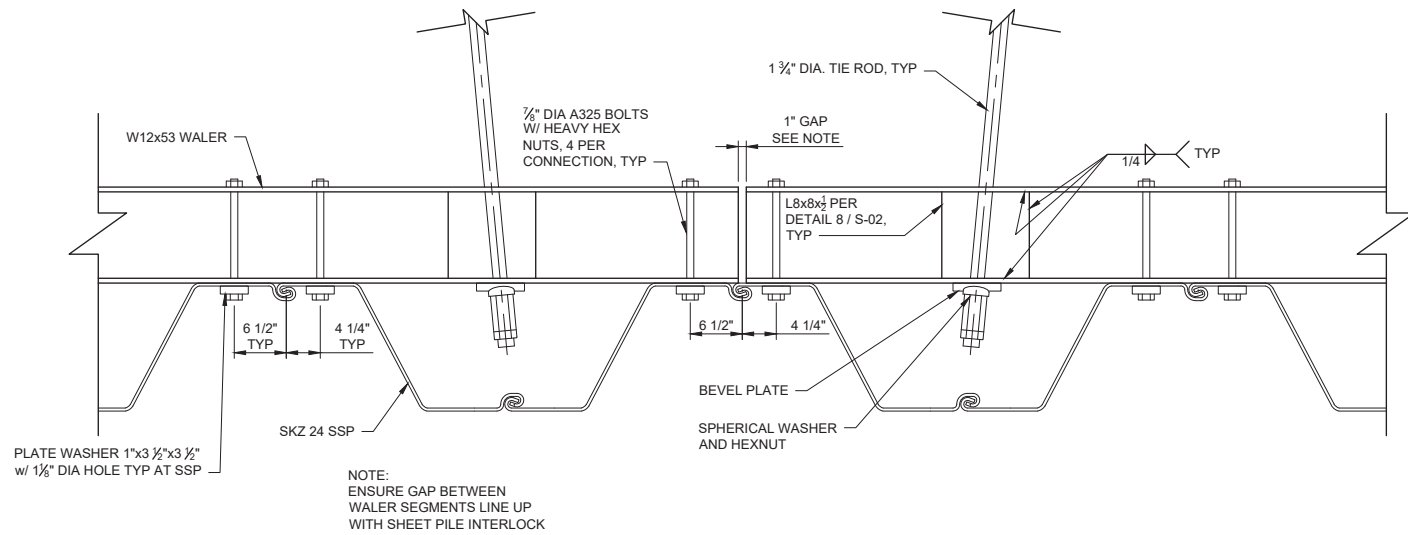
Issued	
Rev	Date Description
1	8-13-20 ADDENDUM 1
0	6-26-20 ISSUED FOR BIDDING

Designed: JEA 6/10/20
 Drawn: LK 6/10/20
 Checked: TMR 6/10/20
 Approved: WHW 6/10/20

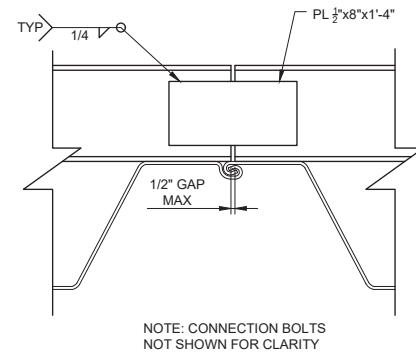
PROJECT NUMBER
60283337

SHEET REFERENCE NUMBER
S-01
SHEET 7 OF 11

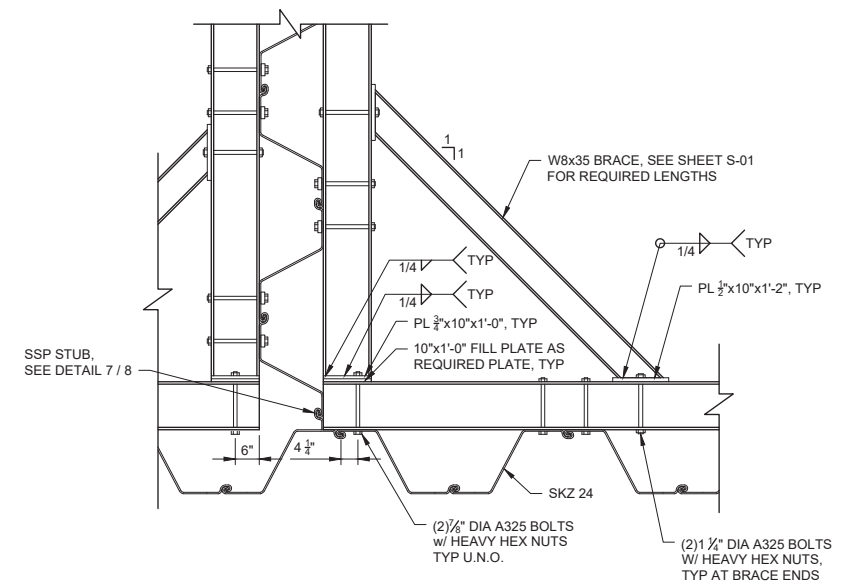
File name: C:\USERS\KOSTAMOL\ONE DRIVE\AECOM DIRECTORY\HOME DRIVE\DOCUMENTS\PROJECT WORK\JACKSON HARBOR\000_WORK\1910_CAD\20-SHEETS\SS-02_JACKSON HARBOR.DWG
 Project Management Initials: Last saved by: KOSTAMOL, Last checked: #, Designer: #, Checked: #, Approved: #, ARCH D 24" x 36"



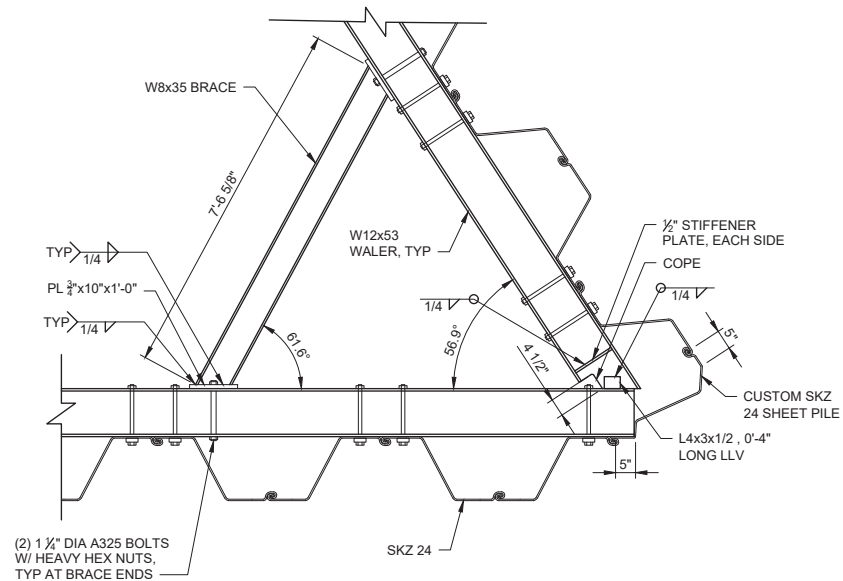
1 | WALER DETAIL AT EXP. JOINT
S-02 Scale 1" = 1'-0"



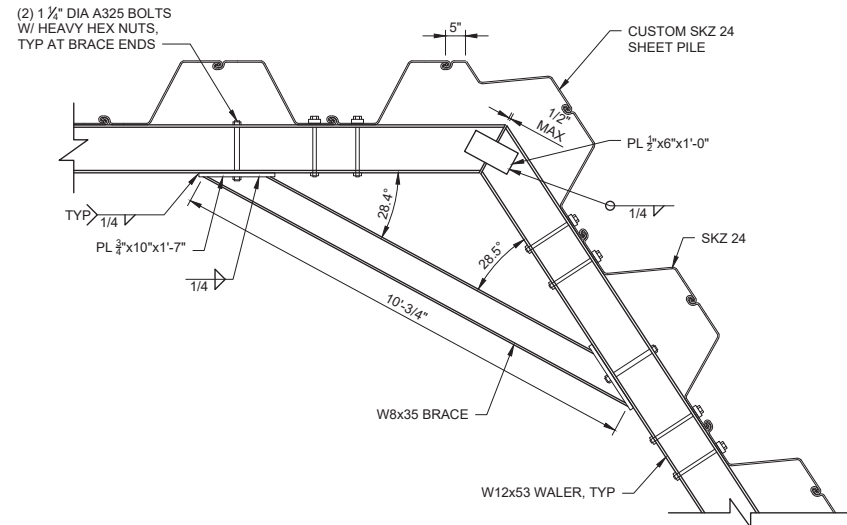
2 | WALER DETAIL AT CONST. JOINT
S-02 Scale 1" = 1'-0"



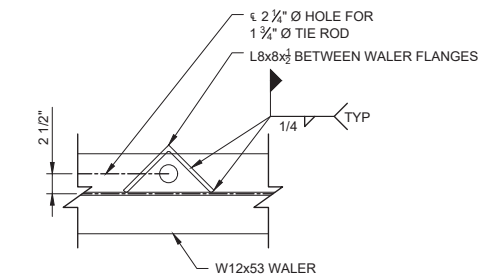
3 | BRACE DETAIL
S-02 Scale 1/2" = 1'-0"



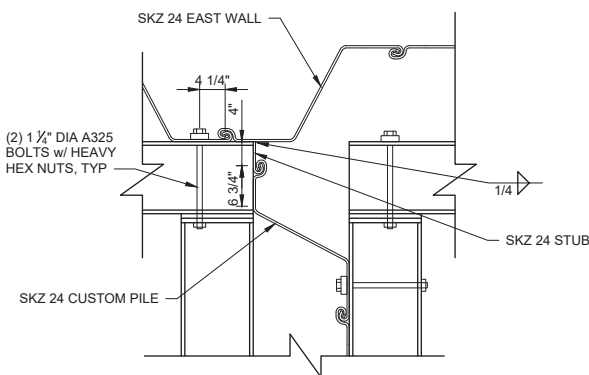
4 | DETAIL AT SOUTHWEST CORNER
S-02 Scale 1/2" = 1'-0"



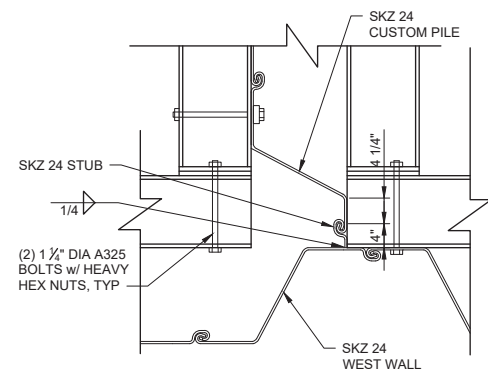
5 | DETAIL AT SOUTHEAST CORNER
S-02 Scale 1/2" = 1'-0"



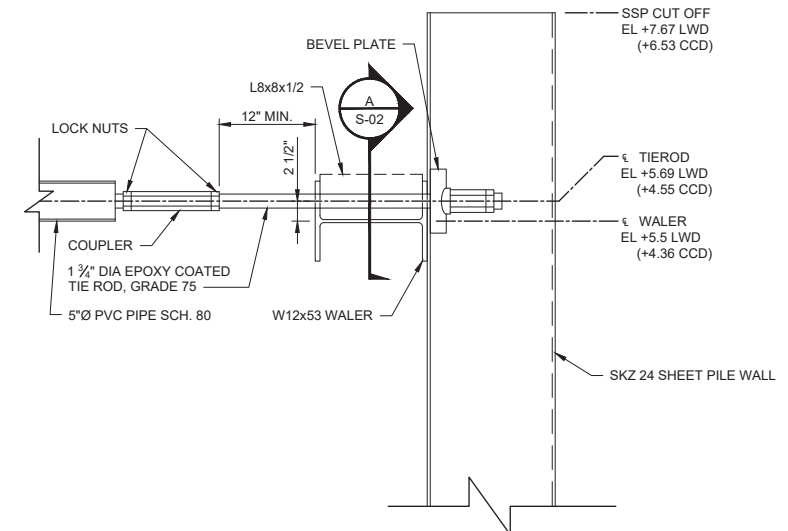
A | SECTION AT TIE-ROD
S-02 Scale 1" = 1'-0"



6 | CROSS WALL TO EAST WALL CONNECTION
S-02 Scale 3/4" = 1'-0"



7 | CROSS WALL TO WEST WALL CONNECTION
S-02 Scale 3/4" = 1'-0"



8 | TIEROD TO WALER CONNECTION
S-02 Scale 1" = 1'-0"



303 East Wacker Dr. Suite 1400
Chicago, Illinois 60601

312.939.1000

www.aecom.com

Copyright 2020 ©
By: AECOM USA, Inc

CHICAGO PARK DISTRICT
 JACKSON HARBOR
 CHICAGO, IL

JACKSON HARBOR
 PIER FRAMING DETAILS

Issued

Rev	Date	Description
1	8-13-20	ADDENDUM 1
0	6-26-20	ISSUED FOR BIDDING

Designed: JEA 6/10/20
 Drawn: LK 6/10/20
 Checked: TMR 6/10/20
 Approved: WHW 6/10/20

PROJECT NUMBER
60283337

SHEET REFERENCE NUMBER

S-02

SHEET 7 OF 11

Issued

Rev	Date	Description
1	8-13-20	ADDENDUM 1
0	6-26-20	ISSUED FOR BIDDING

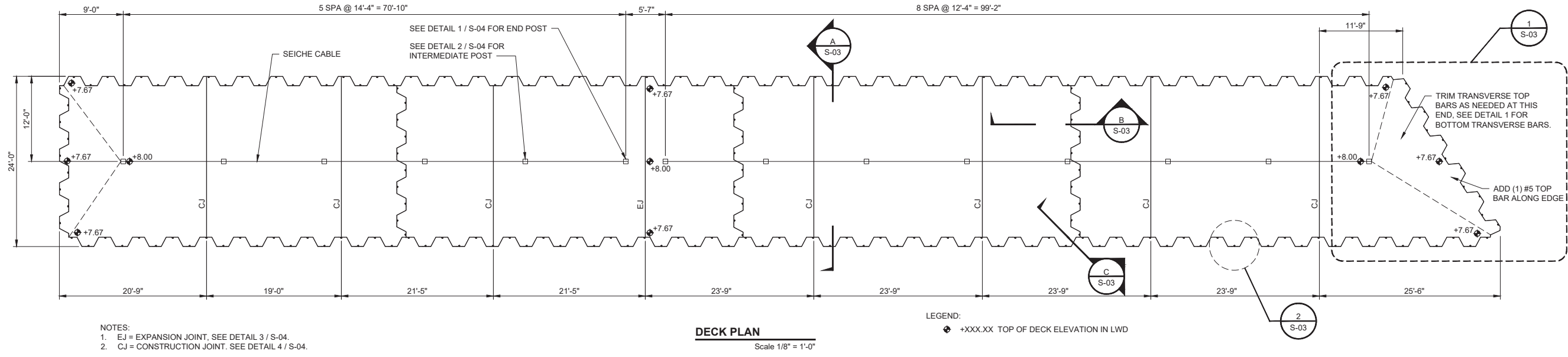
Designed: JEA 6/10/20
Drawn: DPE 6/10/20
Checked: TMR 6/10/20
Approved: WHW 6/10/20

PROJECT NUMBER
60283337

SHEET REFERENCE NUMBER

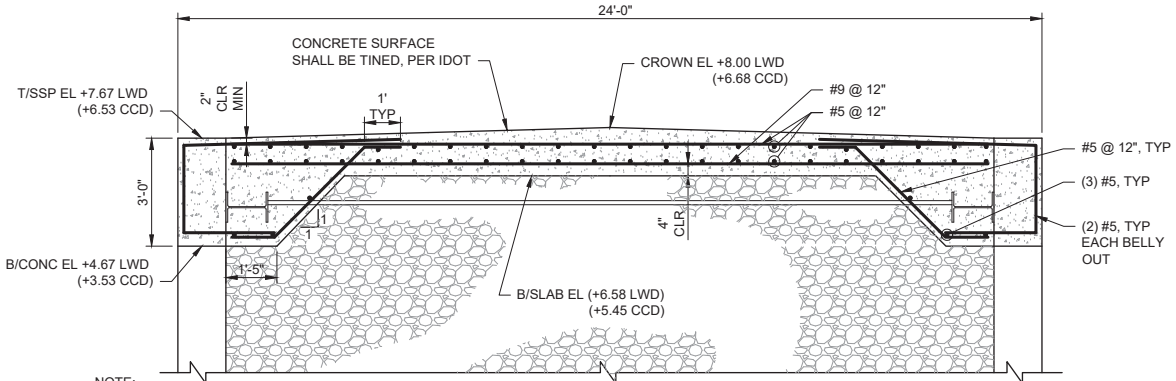
S-03

File name: C:\USERS\KOSTAMOLONEDRIVE - AECOM\DIRECTOR\HOME DRIVE\DOCUMENTS\PROJECT WORK\JACKSON HARBOR\00_WORK\1910_CAD\20-SHEETS\SS-03_JACKSON HARBOR.DWG
Last saved by: KOSTAMOLONEDRIVE - AECOM
Project Management Initials: Last
Designer: Checked: Approved: ARCH D 24" x 36"



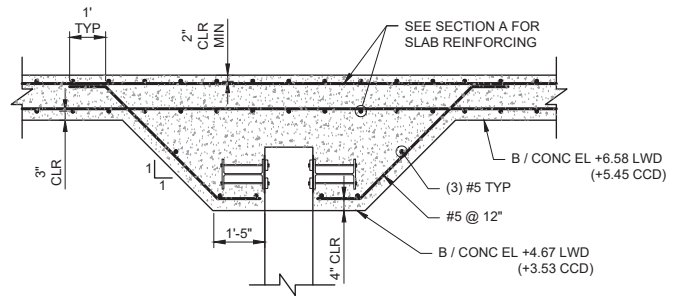
- NOTES:**
1. EJ = EXPANSION JOINT. SEE DETAIL 3 / S-04.
2. CJ = CONSTRUCTION JOINT. SEE DETAIL 4 / S-04.

DECK PLAN
Scale 1/8" = 1'-0"

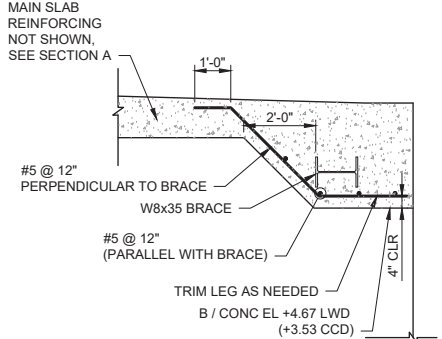


NOTE:
PROVIDE 2" CLEAR COVER BETWEEN SHEET PILING AND ADJACENT REINFORCING

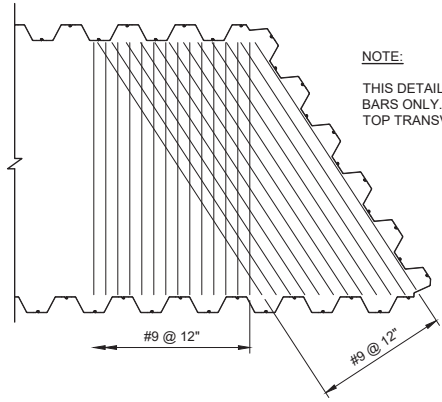
A SECTION
S-03 Scale 3/8" = 1'-0"



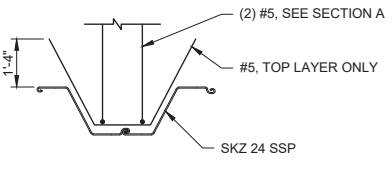
B SECTION
S-03 Scale 3/8" = 1'-0"



C SECTION AT BRACE
S-03 Scale 3/8" = 1'-0"

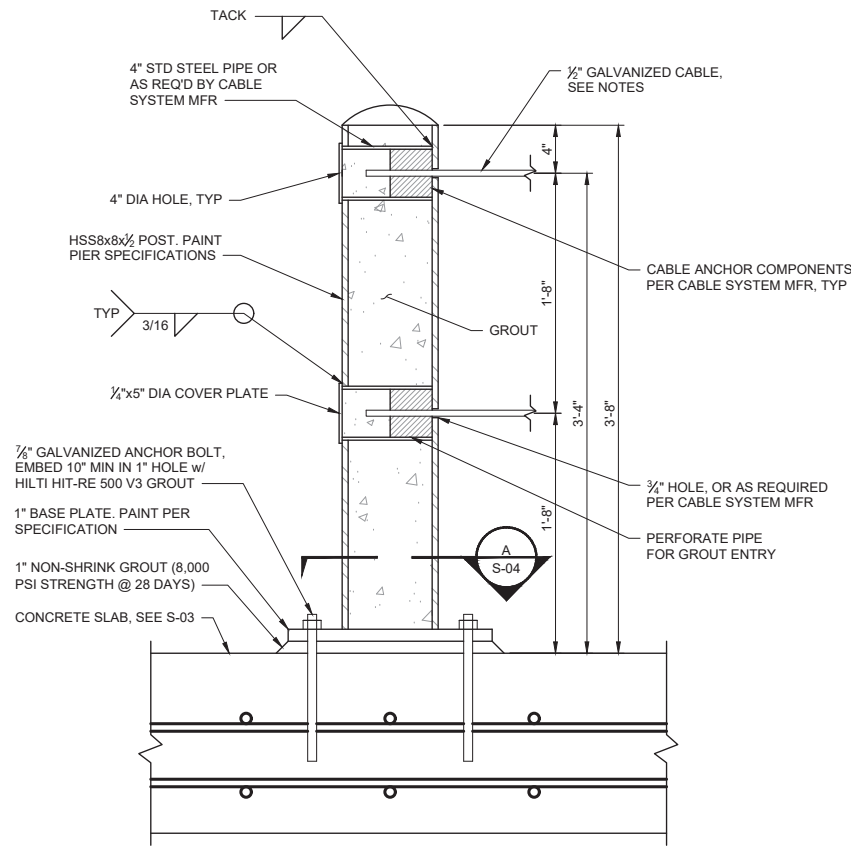


1 BOTTOM BAR DETAIL AT SOUTH END
S-03 Scale: N.T.S.

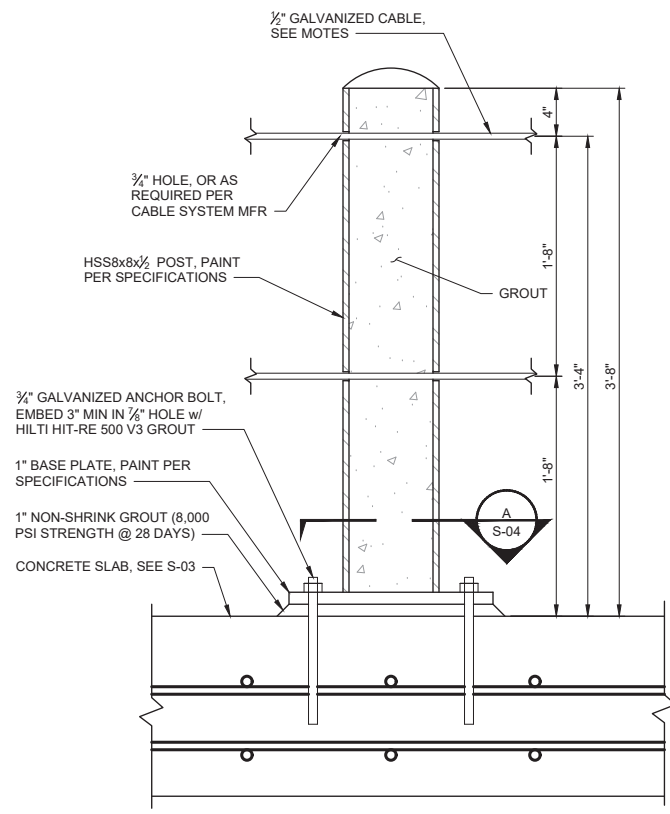


2 DETAIL AT BELLY-OUT
S-03 Scale 3/8" = 1'-0"

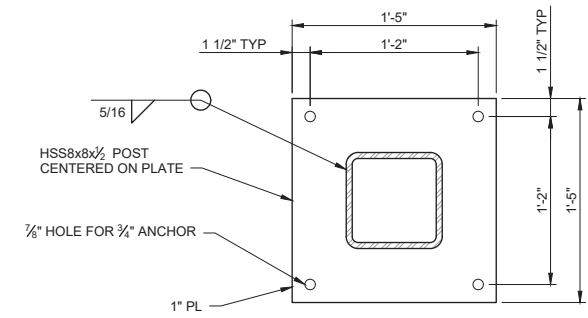
File name: C:\USERS\KOSTAMOLONEDRIVE - AECOM DIRECTORY\HOME DRIVE\DOCUMENTS\PROJECT WORK\JACKSON HARBOR\00_WORK\1010_CAD\20-SHEETS\SS-04_JACKSON HARBOR.DWG
 Plotted: 2020-08-13
 Last saved by: EGGERDINGD Last Project Management Initials:
 Designer: ##
 Checked: ##
 Approved: ##
 ARCH D 24" x 36"



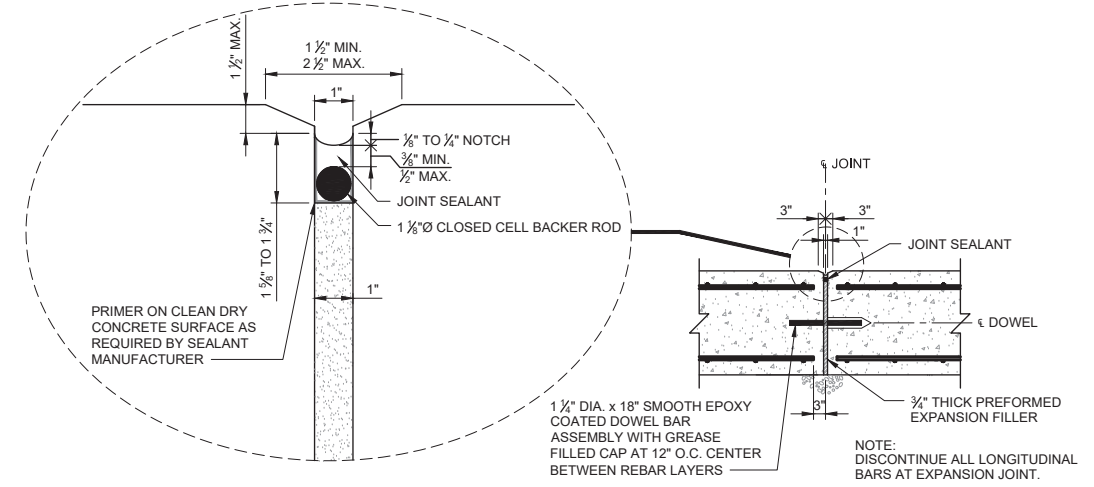
1 SEICHE CABLE END POST DETAIL
S-04 Scale 1 1/2" = 1'-0"



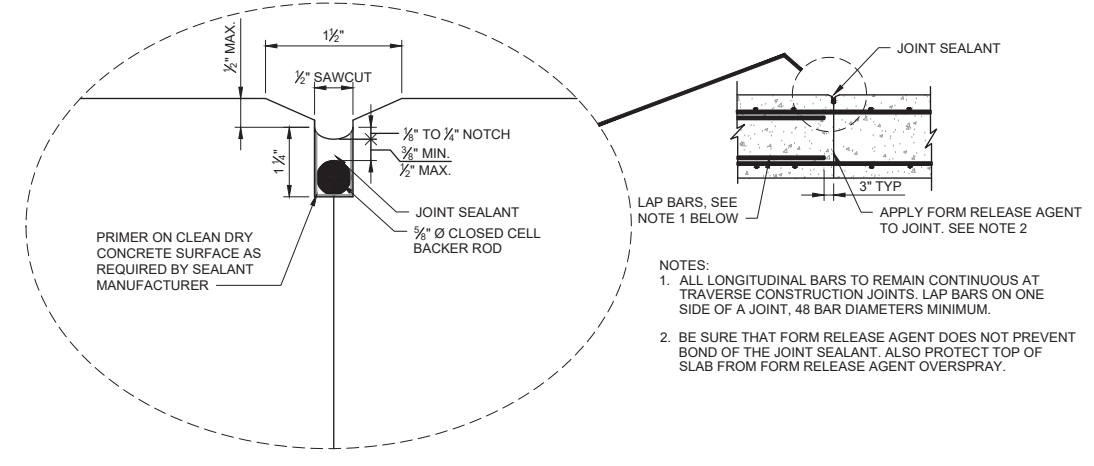
2 SEICHE CABLE INTERMEDIATE POST DETAIL
S-04 Scale 1 1/2" = 1'-0"



A VIEW - BASE PLATE
S-04 Scale 1 1/2" = 1'-0"



3 EXPANSION DETAIL
S-04 Scale: N.T.S.



4 TRANVERSE CONSTRUCTION JOINT (CJ) DETAIL
S-04 Scale: N.T.S.

SEICHE CABLE NOTES:

- ALL CABLES SHALL BE HOT-DIPPED GALVANIZED.
- POST-TENSION SYSTEM, WEDGES, INSERTS, CABLES, AND OTHER COMPONENTS SHALL BE PER BARRIER CABLE SYSTEMS, INC. OR EQUAL.
- INSTALL CABLES WITH A MINIMUM TENSION OF 2.5 KIPS AND A MAXIMUM TENSION OF 3.0 KIPS AFTER SEATING LOSSES.
- APPLY JACKING LOAD IN ACCORDANCE WITH POST-TENSIONING INSTITUTE (PTI) RECOMMENDATIONS
- CABLES MAY BE POST TENSIONED AT EITHER END.



303 East Wacker Dr. Suite 1400
Chicago, Illinois 60601

312.939.1000

www.aecom.com

Copyright 2020 ©
By: AECOM USA, Inc

CHICAGO PARK DISTRICT
 JACKSON HARBOR
 CHICAGO, IL

JACKSON HARBOR
 STRUCTURAL DETAILS

Issued

Rev	Date	Description
1	8-13-20	ADDENDUM 1
0	6-26-20	ISSUED FOR BIDDING

Designed: JEA 6/10/20
Drawn: DPE 6/10/20
Checked: TMR 6/10/20
Approved: WHW 6/10/20

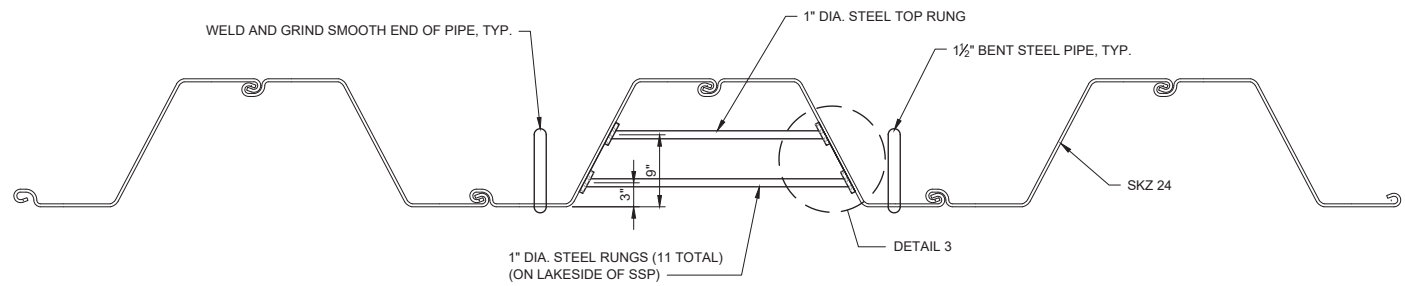
PROJECT NUMBER
60283337

SHEET REFERENCE NUMBER

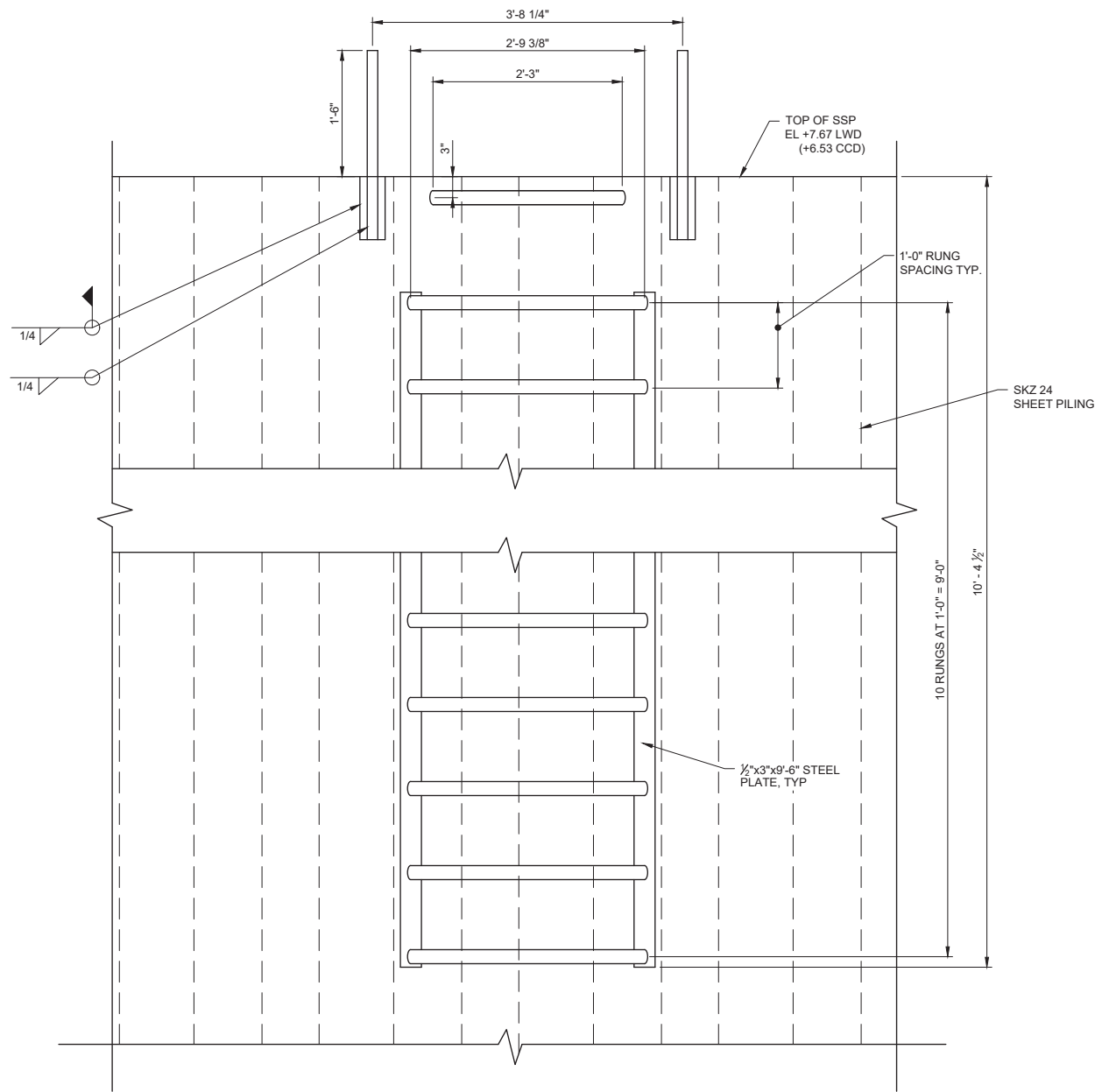
S-04

SHEET XX OF 11

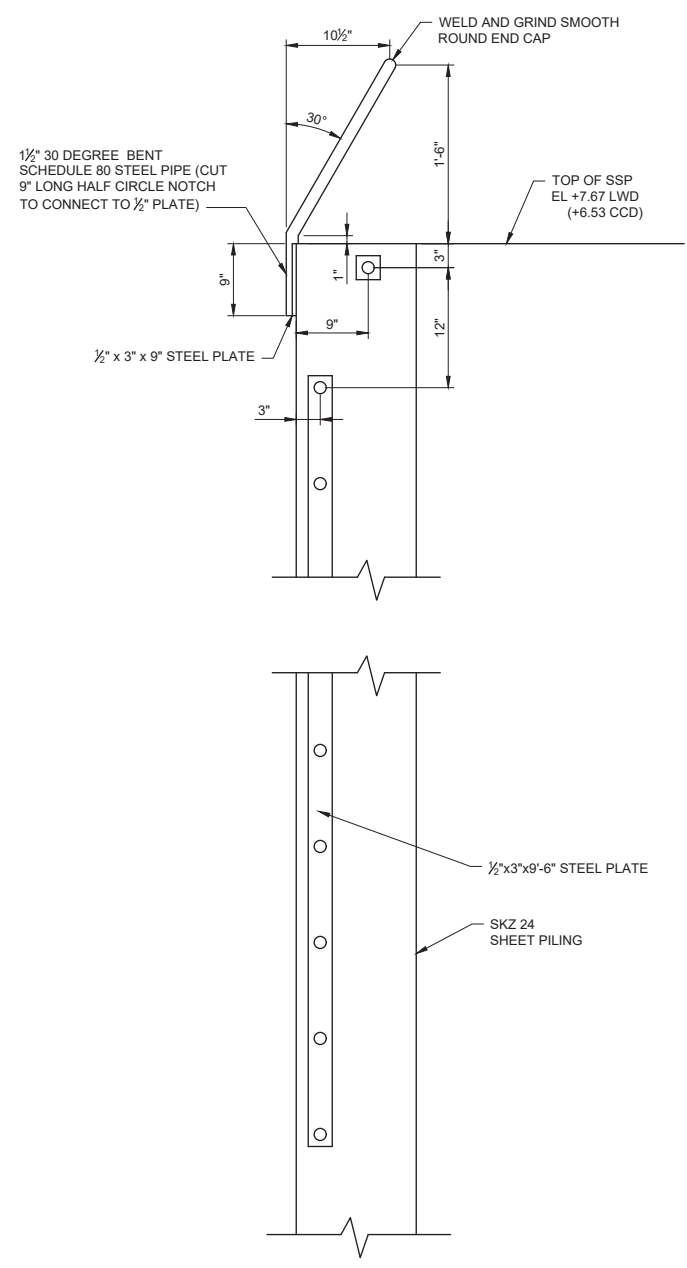
File name: C:\USERS\KOSTAMOL\ONE\DRIVE - AECOM\PROJECTS\DRIVE\DOCUMENTS\PROJECT WORK\JACKSON HARBOR\00_WORK\1910_CAD\20-SHEETS\SS-05_JACKSON HARBOR.DWG
 Last saved by: KOSTAMOL
 Project Management Initials: Last
 Designer: ##
 Checked: ##
 Approved: ##
 ARCH D 24" x 36"



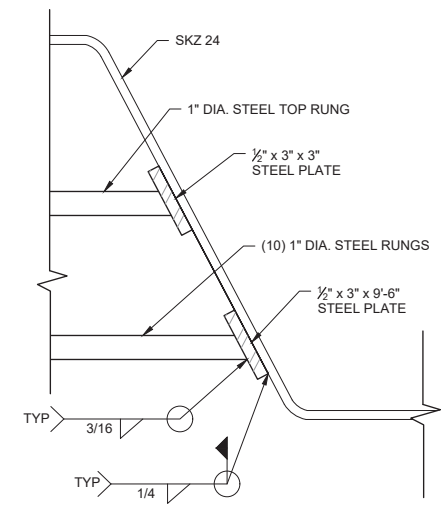
1 SAFETY LADDER PLAN VIEW
S-05 Scale 1" = 1'-0"



2 SAFETY LADDER LAKESIDE VIEW
S-05 Scale 1" = 1'-0"



A SAFETY LADDER SIDE VIEW
S-05 Scale 1" = 1'-0"



3 DETAIL - SAFETY LADDER RUNGS
S-05 Scale 3" = 1'-0"

- NOTES:
- EACH LADDER RUNG AND VERTICAL BENT PIPE HAND GRIPS SHALL BE PAINTED PRIOR TO INSTALLATION. THE ENDS OF THE RUNGS SHALL BE MASKED TO ALLOW FOR WELDING.
 - THE TOP 10' OF TWO (2) SKZ 24 SHEET PILES AT LADDERS SHALL BE PAINTED PRIOR TO DRIVING SKZ 24 SHEET PILES. PAINT SHALL BE SHERWIN WILLIAMS MLTX SG SAFETY YELLOW PAINT (OR APPROVED EQUAL). AFTER PILE DRIVING, GRIND PAINT AS NECESSARY TO ALLOW FOR WELDING OF LADDER COMPONENTS. PERFORM TOUCH-UP PAINTING AT WELDS ABOVE WATER.

Issued	
Rev	Date Description
1	8-13-20 ADDENDUM 1
0	6-26-20 ISSUED FOR BIDDING

Designed: JEA 6/10/20
 Drawn: DPE 6/10/20
 Checked: TMR 6/10/20
 Approved: WHW 6/10/20

PROJECT NUMBER
60283337
 SHEET REFERENCE NUMBER